



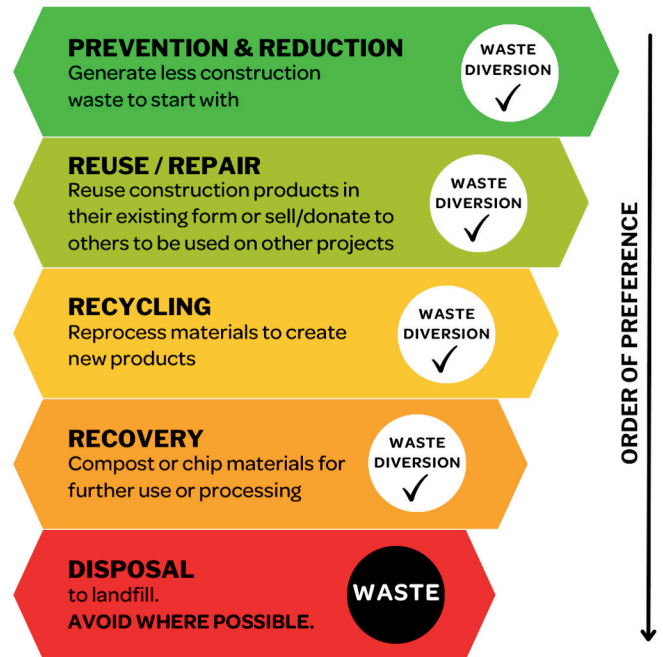
### Why reduce construction waste?

#### → SAVE MONEY

- Save on waste disposal costs as landfill costs rise annually.
- Make money from selling usable materials or fixtures, or recycling scrap metal.
- Reduce your costs in needing to buy less new materials for upcoming projects.
- Reduce costs for purchase and transport of wasted materials.

#### → WIN WORK

- Win contracts for projects that specify waste reduction requirements, or attract clients who want to “do the right thing”.
- Improve client satisfaction, your company image, & encourage repeat business.
- Help attract and retain employees.



### CHECKLIST → Use this as a guide when you're preparing to start a new job

- Complete a waste reduction plan - templates downloadable from REBRI.
- Assign responsibility for on-site waste reduction & management.
- Include waste reduction requirements in contracts & subcontractor agreements.
- Have accurate cutting lists and quantity surveys to avoid over-ordering and product wastage. Order just-in-time delivery of products to reduce the storage time on-site and the potential for damage.
- Set up separation bins, skips or piles for recycling and reuse, and clear signage for each.
- Brief all staff, contractors, subcontractors and managers on your waste system, & what you expect from them. Include this in induction material and other communications. Encourage staff to BYO reusable water bottle, coffee cup and lunchbox with them, to further reduce waste onsite.
- Make waste a regular item on toolbox and project management meetings, and provide updates to clients.
- Monitor your bins/piles throughout your build to make sure materials are being separated for reuse, recycling and recovery.
- Whenever you can, reuse off-cuts, scraps and usable waste materials. Keep them in a handy place until the end of the project. If they're not used on this project, try to utilise them on an upcoming project, or donate/sell them.
- Have incentives like a morning tea or Friday shout if waste reduction goals are achieved.



### Resources

There are simple ways you can reduce and better manage waste on all stages of construction projects. To learn more, see the national Reducing Building Material Wastes (REBRI) website: [www.rebri.org.nz](http://www.rebri.org.nz).

MATERIAL	SOLUTIONS	CONTACT
 <p><b>TIMBER</b> - Offcuts &amp; excess timber, treated &amp; untreated</p>	<ul style="list-style-type: none"> <li>• Timber bin from <a href="#">Northland Waste</a> picked up weekly or on demand</li> <li>• Tradie Bag from <a href="#">Marsden Metals</a></li> <li>• Collect &amp; take to <a href="#">Hakaru Re:Sort</a></li> </ul>	<p><b>Northland Waste</b> Ph 0800 499 246 <b>Marsden Metals</b> Ph 0800 336 673</p>
 <p><b>SCRAP METAL</b> - Roofing iron &amp; other metal offcuts</p>	<ul style="list-style-type: none"> <li>• Tradie Bag from <a href="#">Marsden Metals</a></li> <li>• Collect &amp; take to <a href="#">Hakaru Re:Sort</a></li> </ul>	<p><b>Marsden Metals</b> Ph 0800 336 673</p>
 <p><b>CARDBOARD</b> - From throughout the build can be flattened &amp; separated</p>	<ul style="list-style-type: none"> <li>• Tradie Bag from <a href="#">Marsden Metals</a></li> <li>• Collect &amp; take to <a href="#">Hakaru Re:Sort</a></li> </ul>	<p><b>Marsden Metals</b> Ph 0800 336 673</p>
 <p><b>PLASTERBOARD</b> - Most plasterboard products can be broken up &amp; used as soil conditioner or composted. Check with the manufacturer to confirm. <a href="#">Green Gorilla</a> will collect plasterboard in Auckland region</p>		<p>See <a href="#">gib.co.nz</a> for guidance on breaking up gib board for soil</p>
 <p><b>Soft plastics from wrapped products and pallet wraps from product delivery</b></p>	<ul style="list-style-type: none"> <li>• Metal frame &amp; bag from <a href="#">Kaipara Refuse</a></li> </ul>	<p><b>Kaipara Refuse</b> Ph 09 4392146</p>
 <p><b>Polystyrene from packaging and materials</b></p>	<ul style="list-style-type: none"> <li>• <a href="#">Expol</a> will recycle FREE &amp; deliver bags to site if using their product</li> <li>• Can drop small amounts to <a href="#">ITM Mangawhai</a> for recycling</li> </ul>	<p><b>Expol</b> Ph 0800 86 33 73</p>
 <p><b>Paint tins/buckets</b></p>	<ul style="list-style-type: none"> <li>• Resene or Dulux in Whangarei</li> </ul>	<p><a href="#">dulux.co.nz</a> <a href="#">resene.co.nz</a></p>
 <p><b>Household/tool batteries:</b></p>	<ul style="list-style-type: none"> <li>• Bunnings Mangawhai</li> </ul>	
 <p><b>Aerosol cans:</b></p>	<ul style="list-style-type: none"> <li>• Take to Hakaru Re:Sort</li> <li>• Or put in yellow recycling bag</li> </ul>	
 <p><b>Plastics, tins &amp; cans:</b></p>	<ul style="list-style-type: none"> <li>• Take to Hakaru Re:Sort</li> <li>• Or put in yellow recycling bag</li> </ul>	